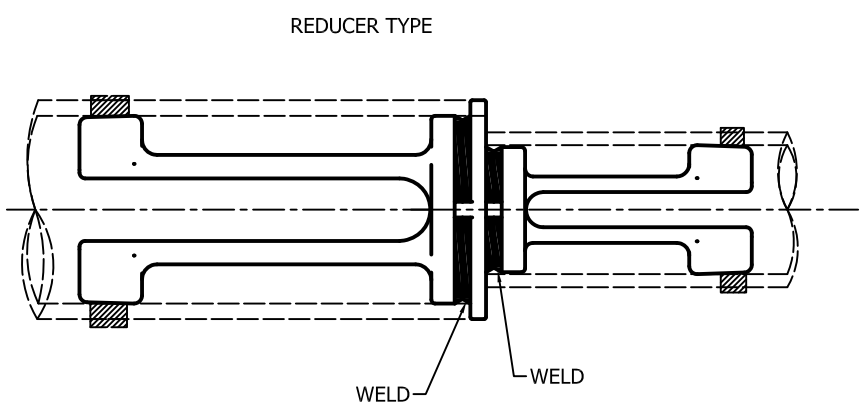
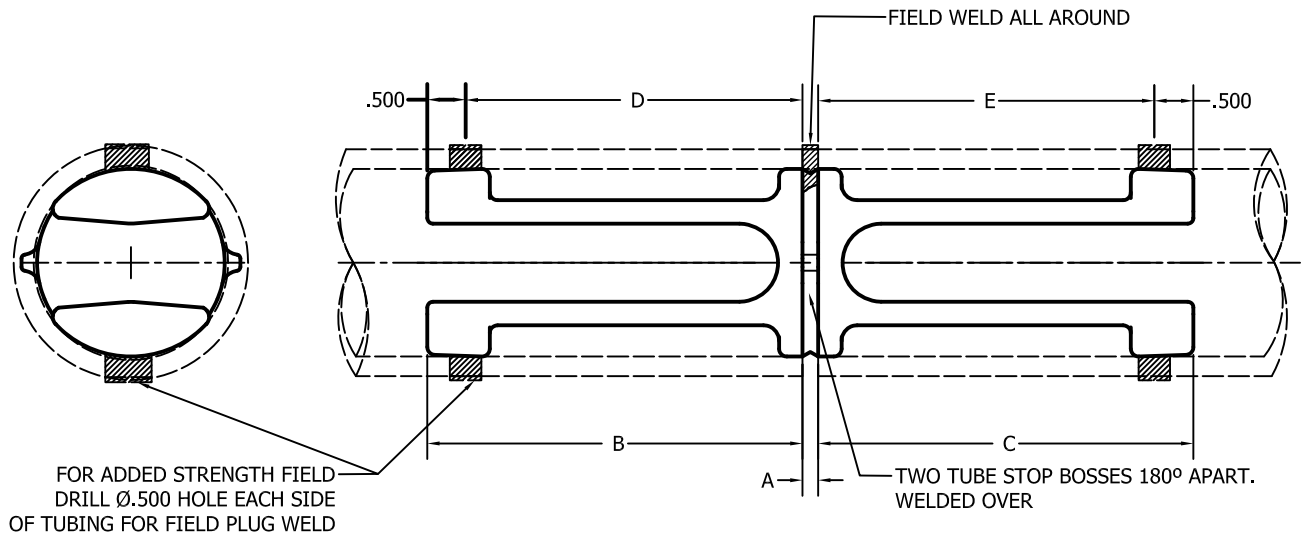


CONDUCTOR PIPE SIZES	CATALOG NUMBER		DIMENSION IN INCHES				
	SPS	EHPS	A	B	C	D	E
3/4" - 3/4"	WC-0606	WCH-0606	.125	1.750	1.750	1.250	1.250
1" - 1"	WC-1010	WCH-1010	.125	2.000	2.000	1.500	1.500
1 1/4" - 1"	WC-1210	WCH-1210	.125	2.500	2.000	2.000	1.500
1 1/4" - 1 1/4"	WC-1212	WCH-1212	.125	2.500	2.500	2.000	2.000
1 1/2" - 1"	WC-1410	WCH-1410	.750	3.000	2.000	2.500	1.500
1 1/2" - 1 1/4"	WC-1412	WCH-1412	.750	3.000	2.500	2.500	2.000
1 1/2" - 1 1/2"	WC-1414	WCH-1414	.125	3.000	3.000	2.500	2.500
2" - 1"	WC-2010	WCH-2010	.750	4.000	2.000	3.500	1.500
2" - 1 1/2"	WC-2014	WCH-2014	.250	4.000	3.000	3.500	2.500
2" - 2"	WC-2020	WCH-2020	.250	4.000	4.000	3.500	3.500
2" - 1 1/2"	WC-2014	WCH-2014	.750	4.000	3.000	3.500	2.500
2 1/2" - 1"	WC-2410	WCH-2410	.750	5.000	2.000	4.500	1.500
2 1/2" - 1"	WC-2412	WCH-2412	.750	2.500	5.00	2.000	4.500
2 1/2" - 2"	WC-2420	WCH-2420	.250	5.000	4.000	4.500	3.500
2 1/2" - 2 1/2"	WC-2424	WCH-2424	.250	5.000	5.000	4.500	4.500
3" - 3/4"	WC-3006	WCH-3006	.625	1.750	6.000	1.250	5.500
3" - 1 1/2"	WC-3014	WCH-3014	.750	6.000	3.000	5.500	2.500
3" - 2"	WC-3020	WCH-3020	.750	6.000	4.000	5.500	3.500
3" - 2 1/2"	WC-3024	WCH-3024	.750	6.000	5.000	5.500	4.500
3" - 3"	WC-3030	WCH-3030	.250	6.000	6.000	5.500	5.500
3 1/2" - 2"	WC-3420	WCH-3420	.750	4.000	6.000	3.500	5.500
3 1/2" - 2 1/2"	WC-3424	WCH-3424	.750	6.000	5.000	5.500	4.500
3 1/2" - 3"	WC-3430	WCH-3430	.750	6.000	6.000	5.500	5.500
3 1/2" - 3 1/2"	WC-3434	WCH-3434	.250	6.000	6.000	5.500	5.500
4" - 1"	WC-4010	WCH-4010	.750	7.000	2.000	6.500	1.500
4" - 1 1/2"	WC-4014	WCH-4014	.750	7.000	3.000	6.500	2.500
4" - 2"	WC-4020	WCH-4020	.750	7.000	4.000	6.500	3.500
4" - 3"	WC-4030	WCH-4030	.750	7.000	6.000	6.500	5.500
4" - 4"	WC-4040	WCH-4040	.250	7.000	7.000	6.500	6.500
4 1/2" - 4 1/2"	WC-4444	WCH-4444	.250	8.000	8.000	7.500	7.500
5" - 3"	WC-5030	WCH-5030	.875	8.000	6.000	7.500	5.500
5" - 3 1/2"	WC-5034	WCH-5034	.750	8.000	6.000	7.500	6.500
5" - 4"	WC-5040	WCH-5040	.750	8.000	7.000	7.500	6.500
5" - 5"	WC-5050	WCH-5050	.250	8.000	8.000	7.500	7.500
6" - 4"	WC-6040	WCH-6040	.750	9.000	7.000	8.500	6.500
6" - 5"	WC-6050	WCH-6050	.750	9.000	8.000	8.500	7.500
6" - 6"	WC-6060	WCH-6060	.250	9.000	9.000	8.500	8.500
8" - 8"	WC-8080	WCH-8080	.250	11.000	11.000	10.500	10.500



NOTES:
1. MATERIAL: 356-T6 ALUMINUM CASTING.

70168	06/19/2017	AS	HG
EC #	DATE	CHG BY	RESP ENG
DESC OF DWG: NEW PRODUCTION DRAWING CREATION IN AUTOCAD			
REASON (S) FOR CHANGE: DISPOSITION OF MAT'L:			

HPS				HUBBELL® POWER SYSTEMS			
CONFIDENTIAL: THIS DRAWING AND ITS CONTENTS ARE CONFIDENTIAL AND THE EXCLUSIVE PROPERTY OF HUBBELL POWER SYSTEMS. NO PUBLICATION, DISTRIBUTION OR COPIES MAY BE MADE WITHOUT THE WRITTEN CONSENT OF HUBBELL POWER SYSTEMS. HUBBELL POWER SYSTEMS UNPUBLISHED ALL RIGHTS RESERVED UNDER THE COPYRIGHT LAWS				TITLE WELDED TUBE COUPLER TYPES WC & WCH			
				SIZE C	DWG NO. C-1436	CAT / PART / ASSY NO. WC- & WCH- (SEE TABLE)	
DO NOT SCALE THIS DRAWING		DRN BY WDS	DATE 9/13/57	SHEET 1 OF 1			